

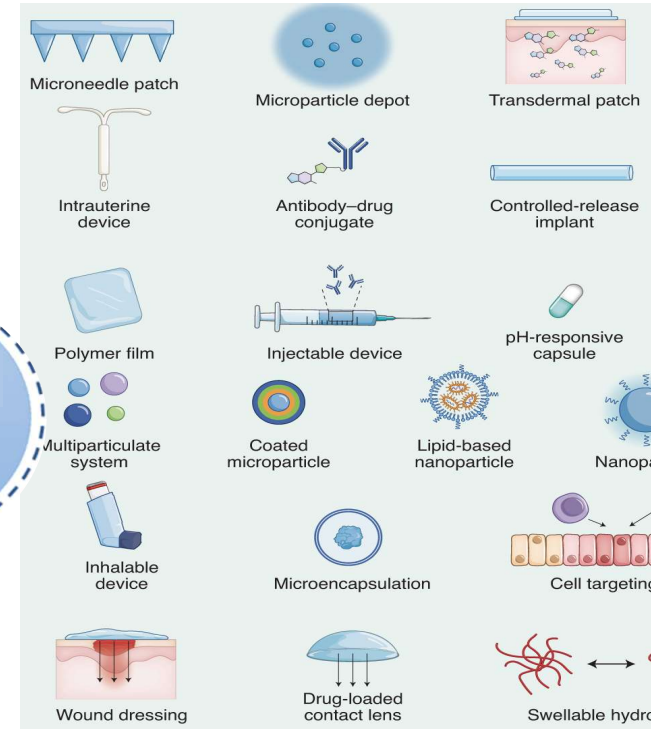
Tesi Sperimentale (6 mesi) Farmacia



Limitations

- Poor absorption from target site
- Poor Bioavailability
- High First-pass Metabolism
- Fluctuations in Plasma drug level
- Premature excretion from the body
- Repeated dosing
- High dose dumping

Solutions



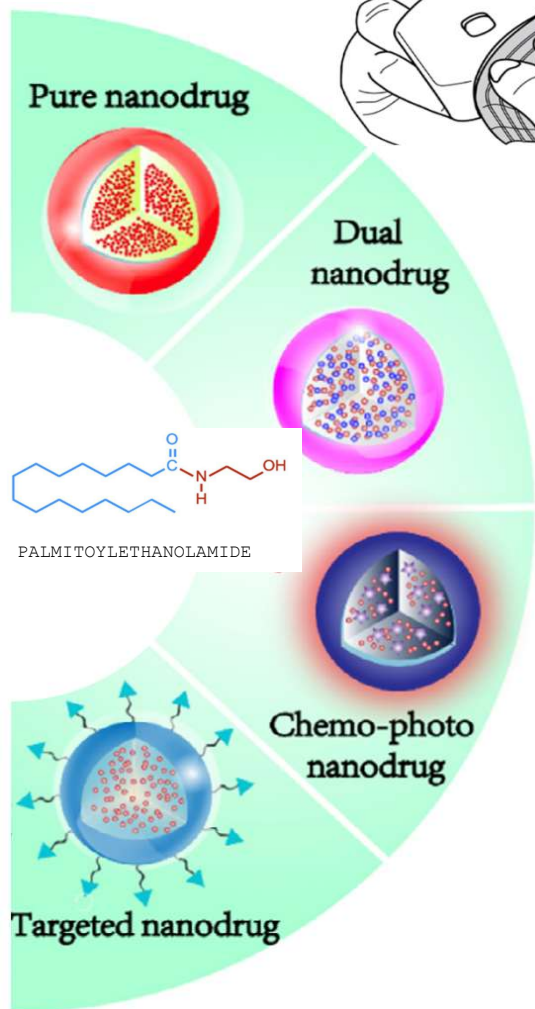
INHALATORY ADMINISTRATION ROUTE for anti - inflammatory treatment



zetasizer



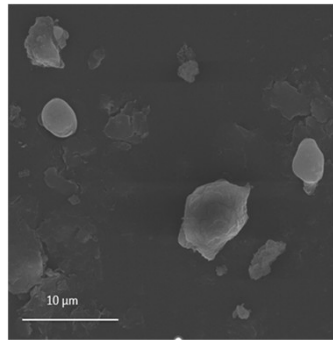
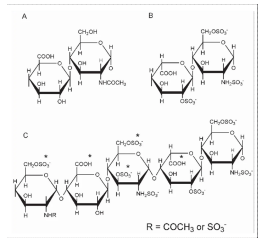
High-performance liquid chromatograph



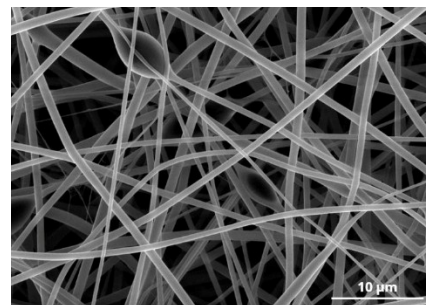
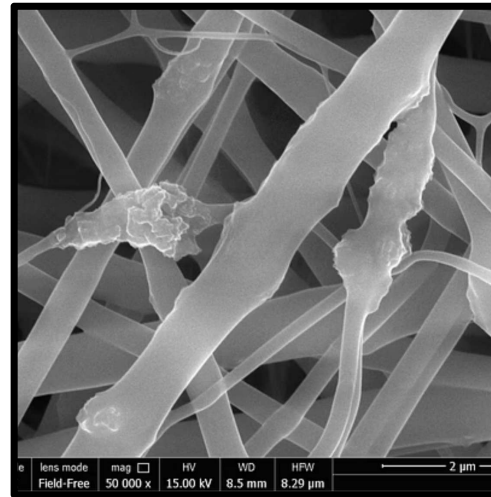
Twin Glass Impinger

TOPICAL ADMINISTRATION ROUTE for wound healing

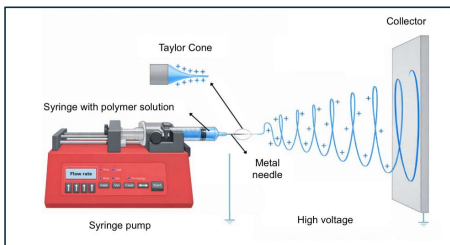
Heparin



Polyelectrolyte complexes (PEC)



Electrospun Nanofibers

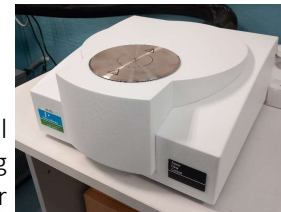


Advanced BioMaterials
LABORATORY

In collaboration with
Prof. Michele Bianchi



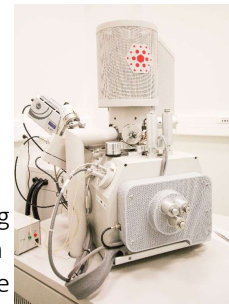
Spectrophotometer



Differential Scanning Calorimeter



FT-IR

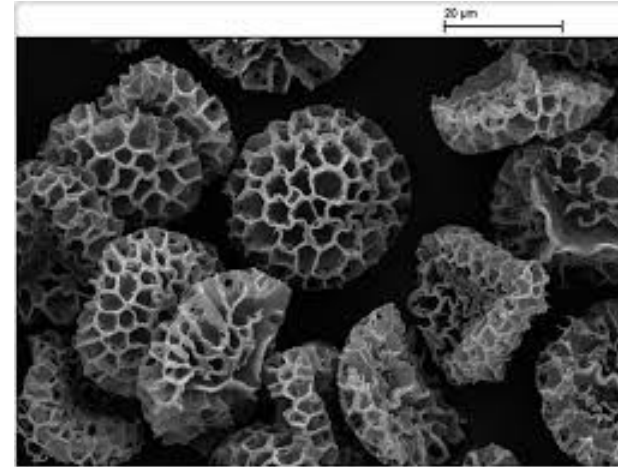
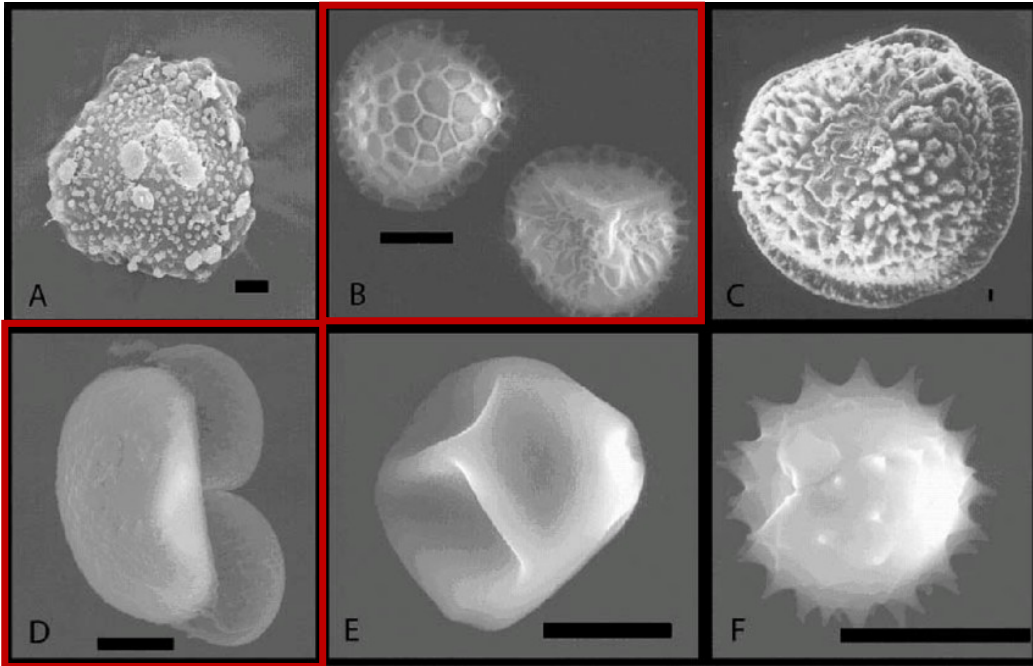


Scanning Electron Microscope

ORAL ADMINISTRATION ROUTE

use of plant spores as carriers for active ingredients

In collaboration with
Laboratory of
Palynology
and Palaeobotany



posti disponibili per a.a. 2026/27:

1 per tesi sperimentale

2 per tesi compilativa



Prof.ssa Eliana Grazia Leo

Tesi in azienda

Convenzione con:

Regulatory Affairs Consultant & Project

JSB Solutions srl

Firenze | Milano | Parma | Roma

Headquarters: Via di Calenzano 62, Sesto Fiorentino (FI)



Società di servizi nel settore **Life Science**: offre consulenza, gestione di studi clinici e sviluppo software

COMPLIFE
MEMBER OF L. OSAGROUP

Lab4LIFE | NUTRATECH | THEMA

THEMA | A COMPLIFE COMPANY

Via Saragat, 5
40026 Imola (BO) - Italy

T: +39 0542 643496

M: +39 3473170251

www.complifegroup.com

www.thema-med.com

Società di servizi di consulenza strategico-regolatoria per società operanti nel settore dei **dispositivi medici**, dei **dispositivi medico-diagnostici in vitro** e **integratori alimentari**